

GROUND PREPARATION (CONCRETE FLOOR)

We recommend that you take a moment to read the following information attentively for a better setting of your garden shed.

CLEARING :

A minimum clearing of 28 inches all around the site of the garden shed, free of any obstacle (ex: trees, wires, etc.), is needed. For PVC fences and other fragile finishes, we ask a minimum of 36 inches of clearance. This clearing allows a better installation and will make the maintenance of your yard easier.

If the clearing cannot be respected, CABANONS FONTAINE INC. will add supplementary fees.

Some municipalities ask for a larger clearing. It would be advised to communicate with your municipality to find out about their rules for the setting of a garden shed.

CONCRETE FLOOR :

Your concrete floor should be at least 3" higher than the grass and/or pavement. Place 4" of 0-3/4" gravel under the concrete floor and a 10 mm thick polyethylene (extra strong) between them. The floor should be reinforced with 3/8" rods. These rods should not be closer than 4" to the side of the floor and needs to form squares of no more than 12".



Cabanons Fontaine

SINCE 1976

3497, Industrie boulevard
St-Mathieu de Beloeil (Québec) J3G 4S5

(450) 536-3563

1-888-838-3563

Fax : (450) 536-2006

Technical Service ext 402

fontaine@cabanons.com

www.cabanons.com

GROUND PREPARATION (CONCRETE FLOOR)

SUGGESTION

First STEP :

Dig 6" to 8" the dimension of your garden shed
(ex: Shed 8' x 12' , Dig 8' x 12')

Second STEP :

Spread your geotextile cloth

Third STEP :

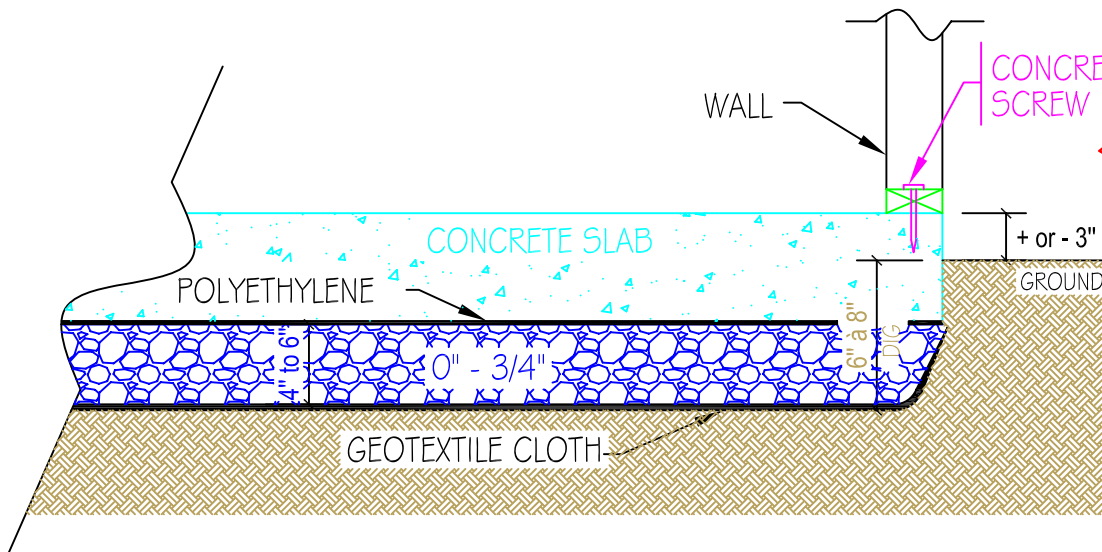
Cover the surface of 4" to 6" of gravel 0-3/4" well compacted

Fourth STEP :

Put your polyethylene

Fifth STEP :

Make a concrete slab between 5" to 8" thickness with rods and wire mesh (see ground section 2 (page 2))



GROUND SECTION (Ground preparation)

IMPORTANT : THE CONCRETE FLOOR SHOULD BE LEVELED AND SQUARE.

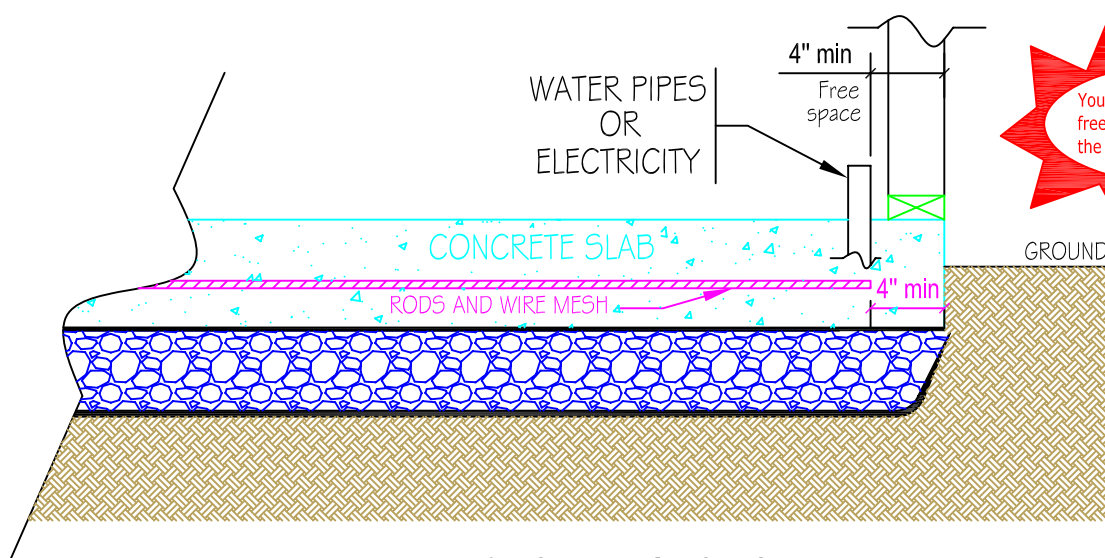
NOTE : Cabanons Fontaine will attach the walls of the garden shed onto the concrete floor with 2-3/4" concrete screws.

GROUND PREPARATION (CONCRETE FLOOR)

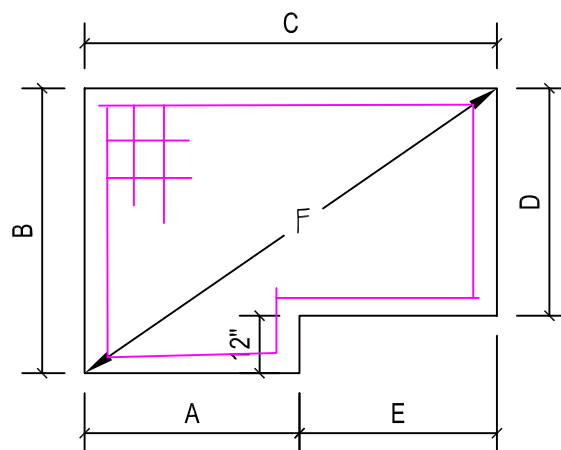
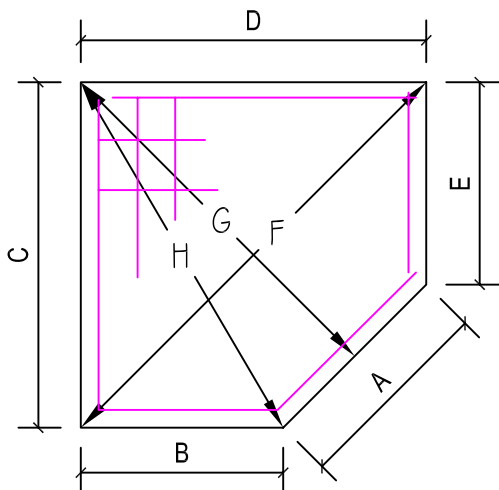
SUGGESTION

NOTE : - The rod should be at 4" from the side of the concrete floor.

- Electric pipes should be at least 4" from the side of the concrete floor.
- For special walls (brick, stone) place the pipe at least 8" from the side of the concrete floor.
- All work related to the concrete slab is the responsibility of the constomer.



GROUND SECTION 2



A =
B =
C =
D =
E =
F =
G =
H =

 = rods and wire mesh